



Healthcare facilities house the vital services we depend on for our daily wellness needs. M+A Matting provides the matting solutions that nurture a safe, clean, and comfortable environment. Prevention is key to good health. The same is true for floor safety and performance. Our healthcare facilities face a variety of unique challenges and risks that can be alleviated with M+A's various matting designed for your specific environments.

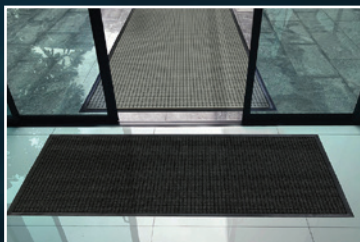


## Entrance Matting

As much as 80% of the dirt that enters a facility is tracked in as people enter the premise according to the ISSA. Entrance matting is a vital component of maintaining a high level of appearance and reducing safety hazards and cleaning costs. This proactive measure greatly reduces visitor and occupant exposure while helping you save hundreds of dollars annually in maintenance fees. M+A offers WaterHog mats, a wide selection of outdoor scraper mats, and various carpeted (wiper) mats to place at the entrance of your building.



SuperScrape Plus®



WaterHog®

## Logo Mats

M+A offers several different logo mat options to display your company's logo and leave a lasting impression on your visitors. Logo mats are recommended for use at entryways, in lobbies, at front desks, or anywhere you want to display your company logo, slogan, artwork, or message to customers/visitors or employees. Photographic quality can be achieved and some styles are available in custom shapes.



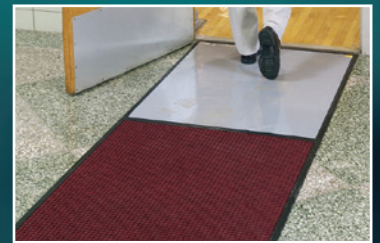
Hog Heaven® Impressions



WaterHog Impressions HD®

## Specialty Matting

Using proper matting and floor coverings is an excellent way to help reduce slips and falls in your facility. M+A is committed to safety and offers an expansive line of mats that have been certified high-traction by the National Floor Safety Institute. M+A's line also includes mats designed for specific applications like restrooms or clean rooms, and disposable adhesive-backed matting for short-term use. Several of M+A's mats are anti-microbially treated and autoclavable to meet healthcare standards.



WaterHog® CleanShield® Stride



CleanShield® Roll Goods (Adhesive-Back Matting)



## Ergonomic Matting

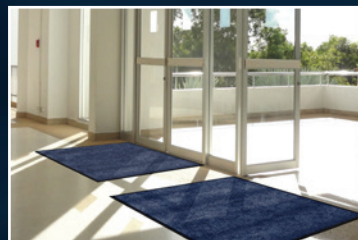
Prolonged standing puts pressure on the feet, leg muscles, spine, neck, and shoulders which can lead to chronic pain, injuries, and muscular disorders. By providing employees with anti-fatigue mats in standing areas, it can increase productivity and reduce the pain associated with standing for long periods of time. Standing on an anti-fatigue mat burns calories, reduces energy consumption, alleviates stress to the back and legs, and also reduces fatigue as a whole.



Comfort Premier

## Eco-Friendly Matting

By preventing contaminants from entering a facility, mats will substantially reduce the need for cleaning chemicals that might be harmful to building occupants and the environment. M+A is committed to developing and manufacturing eco-friendly products, reusing and recycling materials as often as possible.



ColorStar®  
(PET fabric features 100% recycled content reclaimed from plastics)

For more than 50 years, we've been on a mission to develop matting that makes facilities safer, cleaner, and more comfortable.

[www.mamattng.ca](http://www.mamattng.ca)  
800.665.5336